

## INCREASED SAFETY

# AQ../AR.. Series junction boxes – Aluminium low thickness



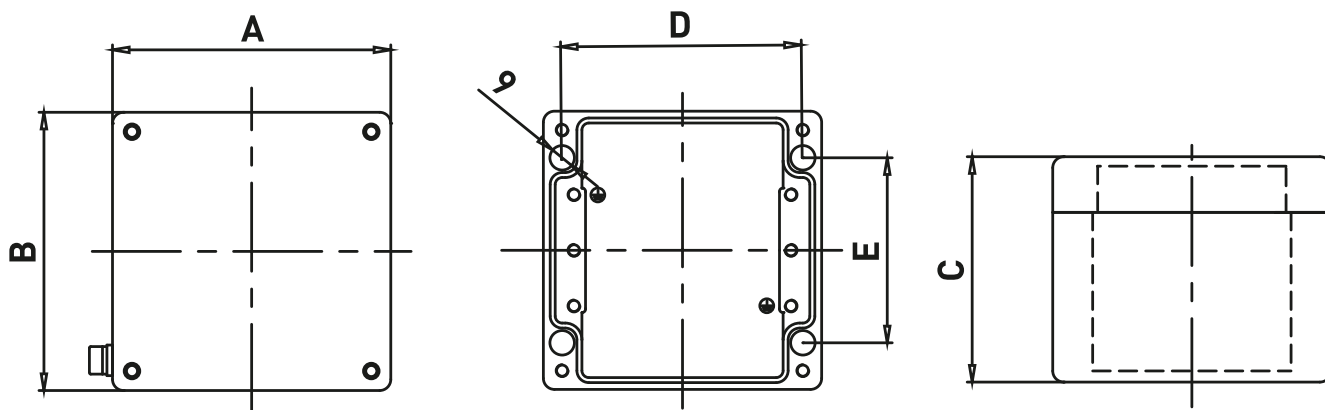
AQ../AR.. Series are used to house Ex e and Ex i terminals. Maximum number of terminals changes on the base of terminals section, enclosure operating temperature and required temperature class. They are ideally suited for chemical agents environments. Sea water corrosion resistance and extremes of low and high temperatures. EFXE prefix is used for Ex de push button station execution and enclosure can be equipped with:

- Standard and emergency push buttons;
- Selector switches;
- Pilot lights;
- Measurement instruments;
- Electric and electronic equipment Ex de certified.

## TECHNICAL FEATURES

<b>Material</b>	Aluminium with low content of copper
<b>IP rating</b>	IP66/IP67
<b>Ambient temperature range</b>	-50°C to +60°C (ATEX) -50°C to +60°C (IECEX - up to +95°C for some "special" models)
<b>Approvals</b>	IMQ 08 ATEX 028X IECEX IMQ 15.0002X TR CU
<b>Marking</b>	II 2 GD Ex e IIC Gb / Ex ia Ga IIC T(**) Ex tb IIIC T(**) Db IP66/67 ** T6/T85°C, T5/T100°C, T4/T135°C
<b>Standard certificate label</b>	Made by self adhesive UV and corrosion resistant polyester, approved by INERIS Laboratory.
<b>Surface treatment</b>	Standard with polyester powder coating RAL 7001
<b>Accessories available upon request</b>	Hinges Drain/breather valve Traffolyte/Stainless steel certificate label Internal mounting plate Earth continuity plates Passing through earth bolt

## Dimensions AQ../AR..



## AQ../AR.. Series junction boxes

CODE	TYPE	DIMENSIONS				
		A	B	C	E	F
B0201.080807	AQ-080806AL	80	75	57	52	63
B0201.081305	AR-081306AL	80	125	57	51	112
B0201.081807	AR-081806AL	80	175	57	52	162
B0201.081809	AR-081808AL	80	175	80	52	162
B0201.082506	AR-082508AL	80	250	80	51	237
B0201.101609	AR-101508AL	100	150	80	64	134
B0201.101009	AQ-101008AL	100	100	81	66	86
B0201.121210	AQ-121208AL	120	122	81	83	106
B0201.122211	AR-122209AL	120	220	90	82	204
B0201.161610	AQ-161609AL	160	160	90	110	140
B0201.165610	AR-162410AL	160	240	100	123	225
B0201.163610	AR-163609AL	160	360	91	110	340
B0201.232012	AR-202311AL	202	232	110	180	180
B0201.232812	AR-232811AL	230	280	110	181	261
B0201.233314	AR-233312AL	231	331	120	178	311

For complete junction boxes is necessary to ask to the Sales Office.