

FLAMEPROOF CP../CPS.. Series junction boxes



The CP../CPS.. range of enclosures, used for terminals wiring, grants Ex d or Ex e mode of protection.

Boxes are manufactured in aluminium with low content of copper and complete with threaded hubs suitable for cable glands or conduit, connection does not affect the internal void, which remains available for terminals wiring.

Internal and external screws are made of AISI316 stainless steel.

This series is tailor made on the base of customer specification, including quantity and type of operators.

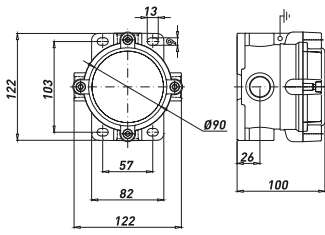
Based on the customer's needs and certificate requirements, our technical department will advise and select the most suitable combination.

These boxes are suitable for hazardous areas of industrial plants for indoor and outdoor applications.

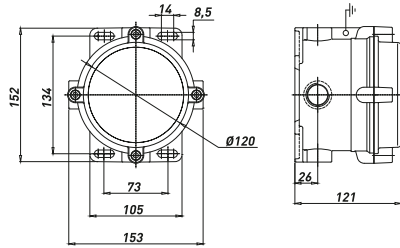
TECHNICAL FEATURES

Material	Aluminium with low content of copper
IP rating	IP66
Ambient temperature range	-50°C to +60°C (ATEX) -60°C to +60°C (IECEX)
Approvals	INERIS 03ATEX0009 IECEX BK1 15.0002 TR CU
Marking	STANDARD II 2 GD Ex d IIC T(*) Gb Ex tb IIIC T(*) Db IP66 Ex db IIC T6/T5/T4 * T6/T85°C, T5/T100°C, T4/T135°C II 2 GD Ex e IIC T(*) Gb Ex t IIIC T(*) Db IP66 * T6/T85°C, T5/T100°C
Surface treatment	Painted by green colour polyurethane painting cycle RAL6003 (other colour available upon request)
Thread	Metric pitch 1.5, ANSI B1.20.1 NPT, UNI-6125
Standard certificate label	Made by self adhesive UV and corrosion resistant polyester, approved by INERIS Laboratory.
Accessories available upon request	Internal anticondensate painting Traffolyte/Stainless steel certificate label Terminals
Maximum number of terminals	{15 x 2,5 mm ² / 12 x 4 mm ² / 8 x 6 mm ² }

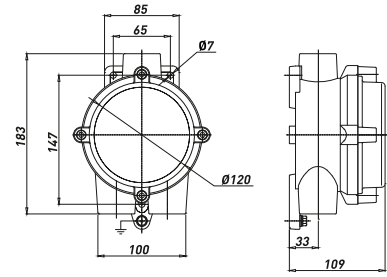
Dimensions CP../CPS..



CPC/CPT/CPX



CPSC/CPST/CPSX



CPSG

CP.. Series (Selection table)

N° OF ENTRIES	TYPE	COLOUR
2	CPC-26 2XM25	RAL6003
	CPC-26 2X3/4" GK	RAL6003
	CPC-26 2X3/4" NPT	RAL6003
3	CPT-26 3XM25	RAL6003
	CPT-26 3X3/4" GK	RAL6003
	CPT-26 3X3/4" NPT	RAL6003
4	CPX-26 4XM25	RAL6003
	CPX-26 4X3/4" GK	RAL6003
	CPX-26 4X3/4" NPT	RAL6003

For complete junction boxes is necessary to ask to the Sales Office.

CPS.. Series (Selection table)

N° OF ENTRIES	TYPE	COLOUR
2	CPSC 2XM25	RAL6003
	CPSC 2XM32	RAL6003
	CPSC 2X3/4" GK	RAL6003
	CPSC 2X3/4" NPT	RAL6003
	CPSC 2X1" GK	RAL6003
	CPSC 2X1" NPT	RAL6003
3	CPST 3XM25	RAL6003
	CPST 3XM32	RAL6003
	CPST 3X3/4" GK	RAL6003
	CPST 3X3/4" NPT	RAL6003
	CPST 3X1" GK	RAL6003
	CPST 3X1" NPT	RAL6003
3	CPSG 3XM25	RAL6003
	CPSG 3XM32	RAL6003
	CPSG 3X3/4" GK	RAL6003
	CPSG 3X3/4" NPT	RAL6003
	CPSG 3X1" GK	RAL6003
	CPSG 3X1" NPT	RAL6003
4	CPSX 4XM25	RAL6003
	CPSX 4XM32	RAL6003
	CPSX 4X3/4" GK	RAL6003
	CPSX 4X3/4" NPT	RAL6003
	CPSX 4X1" GK	RAL6003
	CPSX 4X1" NPT	RAL6003

For complete junction boxes is necessary to ask to the Sales Office.