

FLOODLIGHTS

FL... Series - Copper free aluminium or Stainless steel AISI 316 L



Due to the body made of aluminium with low content of copper and tempered glass, FL... Series floodlights, provided in a wide range of wattage and power, are ideally suited for ON and OFF-SHORE applications and all kinds of industries where there is a high level of corrosion, mainly for lighting wide areas.

To increase further surface protection, upon request it is possible to apply an OFF-SHORE painting cycle suitable for marine environments.

Standard floodlights are manufactured with symmetrical narrow beam reflector and symmetrical wide beam reflector upon request (ordering codes upon request).

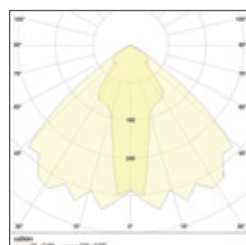
For ease of installation and maintenance, the luminaire features an integral Ex e connection box and AISI304 stainless steel universal mounting bracket.

TECHNICAL FEATURES

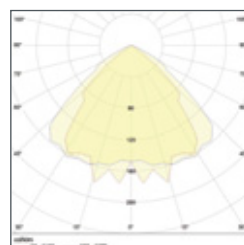
Material	Aluminium with low content of copper Stainless steel AISI 316 L (ordering codes upon request)
IP rating	IP66
Ambient temperature range	-50°C to +55°C ATEX/-20°C to +60°C IECEX
Approvals	Certified 00ATEX0023X (standard)/TR CU (marking upon request, ordering code to be required) IECEX INE 16.0038X
Marking	II 2 GD Ex de IIB+H2 T(**) Gb Ex tb IIIC T(**) Db IP66 ** T4/T135°C, T3/T200°C, T2/T205°-240°C
Gaskets	Gasket made of Nitrile Rubber (NBR) on flat joint
Surface treatment	Painted by green colour polyurethane painting cycle RAL6003 (other colour available upon request)/Internal anticondensate painting/AISI 316 L version unpainted
Entries	N° 2 entries M25x1,5
Included accessories	AISI 316 L Stainless steel screws and AISI304 Stainless steel adjustable bracket
Lamps	Included
Rated operation voltage (UE)	See table
Frequency	See table
Power factor	> 0,95
Accessories	N° 1 brass nickel chrome plated plug + N° 1 brass nickel chrome plated cable gland PNA type c/w set of inner seals
Optional accessories	Protection guard (not to be sold separately unless as a spare part) Special brackets for pole mounting
Options upon request	HOT INSTANT RESTRIKE solution available via twin-arc lamp assuring immediate hot instant restrike ignition with flux that will reach 80% of the nominal lamp flux in about 3 minutes. HOT INSTANT RESTRIKE solution also available via INSTANT RESTRIKE BALLAST, assuring immediate hot instant restrike ignition with 80% of the lamp nominal flux in 7 seconds. (for high pressure sodium version)

Photometric light curves

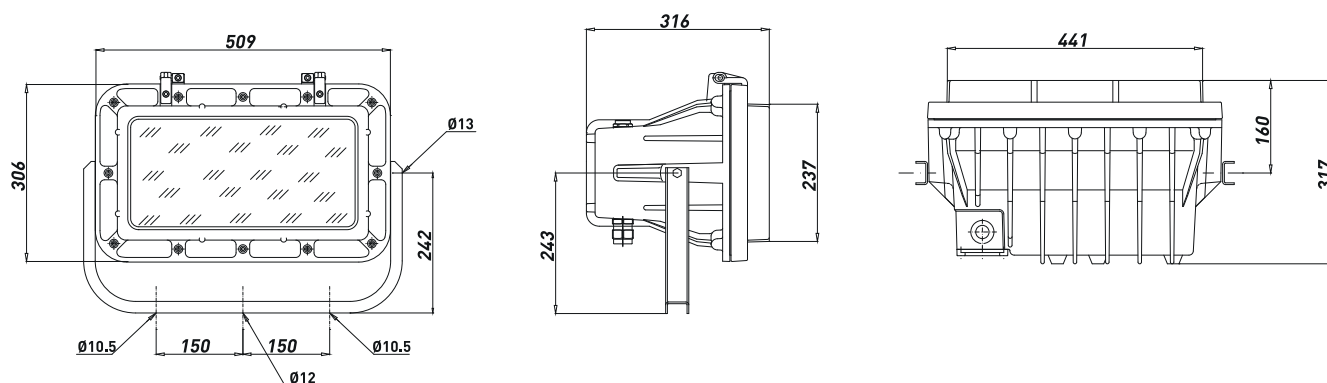
FL-SA IM HG



FL-SA IM HG wide beam



Dimensions FL



(FL..) Floodlights ATEX

TYPE	CODE	LAMP [W]	LAMP. TYPE	WEIGHT [Kg]	VOLTAGE	FREQUENCY	AMBIENT TEMPERATURE	T.CLASS
FL-15SA	A011115111122	150	HPS	22.70	230V*	50HZ***	(-50 °C;+55 °C)	T3
FL-25SA	A011125111122	250	HPS	23.80	230V*	50HZ***	(-50 °C;+55 °C)	T3
FL-40SA	A011140111122	400	HPS	25.00	230V*	50HZ***	(-50 °C;+55 °C)	T3
FL-25IM	A013125111122	250	METAL HALIDE	23.80	230V*	50HZ***	(-50 °C;+55 °C)	T3
FL-40IM	A013140111122	400	METAL HALIDE	22.80	230V*	50HZ***	(-50 °C;+55 °C)	T3
FL-25HG	A012125111122	250	MERCURY VAPOUR	23.70	230V*	50HZ***	(-50 °C;+55 °C)	T3
FL-40HG	A012140111122	400	MERCURY VAPOUR	20.90	230V*	50HZ***	(-50 °C;+55 °C)	T3
FL-14HA	A014114111722	2X70	HALOGEN	20	24VDC	-	(-50 °C;+55 °C)	T3
FL-14HA	A014114111822	2X70	HALOGEN	20	48VDC	-	(-50 °C;+55 °C)	T3
FL-50HA	A014150111922	500	HALOGEN	19	230V**	50/60HZ	(-50 °C;+55 °C)	T3

* 220 V and 240 V versions available upon request

** 220 V, 240 V (marking upon request)

*** 60 Hz available upon request

Mercury vapour light bulb is not included (banned by the European Community)

(FL..) Floodlights IEC Ex

TYPE	CODE	LAMP [W]	LAMP TYPE	WEIGHT [Kg]	VOLTAGE	FREQUENCY	AMBIENT TEMPERATURE	T. CLASS
FL-15SA	A011115111123	150	HPS	22,7	230V*	50HZ***	(-20 °C;+50 °C)	T3
FL-25SA	A011125111123	250	HPS	23,8	230V*	50HZ***	(-20 °C;+50 °C)	T3****
FL-40SA	A011140111123	400	HPS	25	230V*	50HZ***	(-20 °C;+50 °C)	T3****
FL-25IM	A013125111123	250	METAL HALIDE	23,8	230V*	50HZ***	(-20 °C;+50 °C)	T3****
FL-40IM	A013140111123	400	METAL HALIDE	22,8	230V*	50HZ***	(-20 °C;+50 °C)	T3****
FL-25HG	A012125111123	250	MERCURY VAPOUR	23,7	230V*	50HZ***	(-20 °C;+50 °C)	T3****
FL-40HG	A012140111123	400	MERCURY VAPOUR	20,9	230V*	50HZ***	(-20 °C;+50 °C)	T3****
FL-14HA	A014114111728	2X70	HALOGEN	20	24VDC	-	(-20 °C;+60 °C)	T4
FL-14HA	A014114111828	2X70	HALOGEN	20	48VDC	-	(-20 °C;+60 °C)	T4
FL-50HA	A014150111927	500	HALOGEN	19	230V**	50/60HZ	(-20 °C;+60 °C)	T2

* 220V and 240V version available upon request

** 220V, 240V (marking upon request)

*** 60 Hz available upon request

**** in case of maximum ambient temperature reaches +55°C, temperature class changes into T2/205°C (ordering code to be required)
in case of maximum ambient temperature reaches +60°C, temperature class changes into T2/210°C (ordering code to be required)

Below -20°C mercury vapour and metal halide floodlight can be used, providing they are switched on 24 hours a day.

Mercury vapour light bulb is not included (banned by the European Community)